



# CORNERSTONE

## Collaborative Forest Landscape Restoration

<http://www.acconsensus.org>

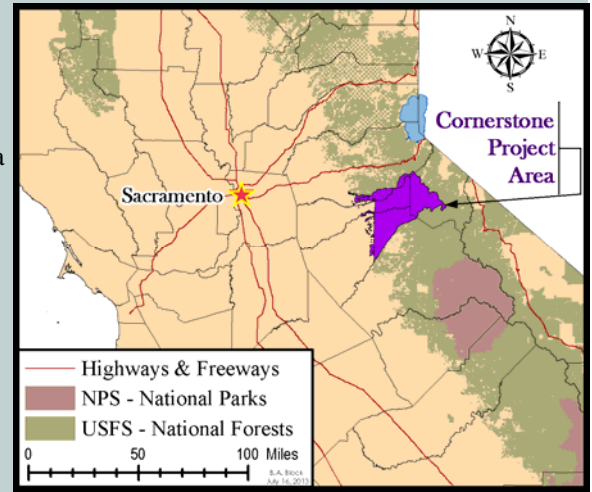
Nov 2015

### Amador Calaveras Consensus Group

- Amador County Veterans Organization
- Amador Firesafe Council
- Amador-Calaveras Cooperative Association for Biomass Utilization (ACCABU)
- Blue Mountain Community Renewal Council
- Blue Mountain GIS
- Buena Vista Biomass Power
- BLM
- CA Department of Fish and Wildlife
- CA Indian Manpower Consortium
- Calaveras Foothills Firesafe Council
- Calaveras Healthy Impact Product Solutions (CHIPS)
- Calaveras County District 2
- CalFauna
- CalFire
- Central Sierra Environmental Resource Center
- Central Sierra Resource Conservation and Development Council
- Ebbetts Pass Forest Watch
- Foothill Conservancy
- Forest Service – Eldorado & Stanislaus NF
- Gwen Starrett
- Heissenbittel Consulting
- John Hoffmann
- Mary Boblet
- Motherlode Job Training
- NRCS
- Pacific Gas and Electric Company
- Sierra Forest Legacy
- Sierra Nevada Conservancy
- Society of American Foresters
- Smith's Grinding
- Steve Wilensky
- The Nature Conservancy
- Vicini Brothers Green Material Recycling
- West Point Fire District

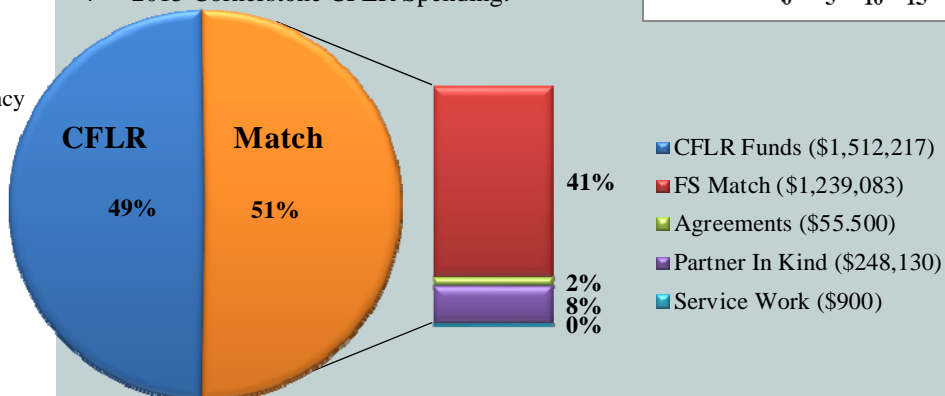
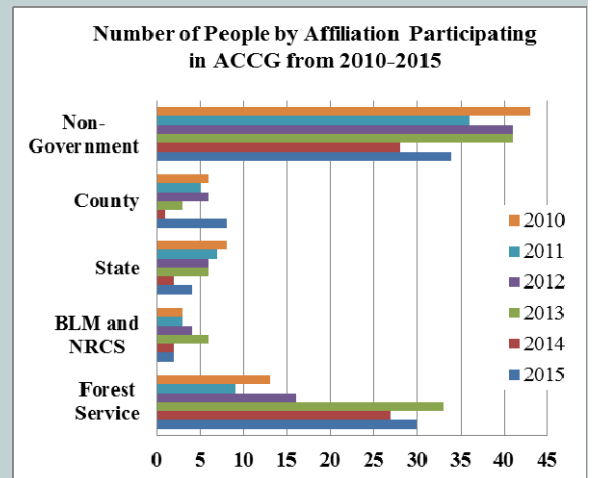
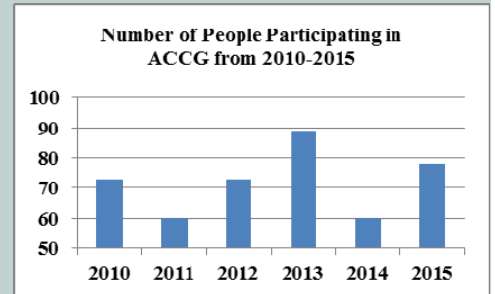
### Background

- ◇ The Cornerstone CFLR project is focused in the upper reaches of the Mokelumne River headwater, located in the central Sierra Nevada Mountains of California.
- ◇ The Cornerstone project area encompasses approximately 390,904 acres, representing 76% USFS, 22% Private, and < 1% State and County.
- ◇ The project area is within Amador, El Dorado, Calaveras, and Alpine Counties in the Eldorado and Stanislaus National Forests.
- ◇ Project area is nested in an ACCG strategy for an 840,316 acre all-lands planning area.
- ◇ \$1,740,000 average annual funding request for the 10-year planning window for Cornerstone CFLR.



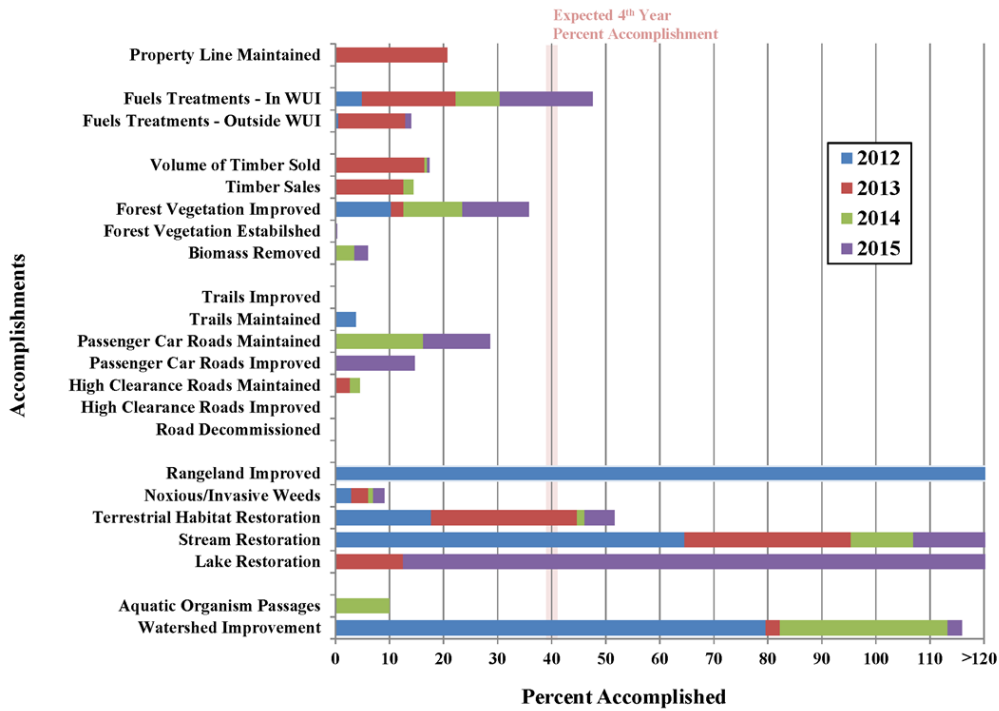
### Successes and Strengths

- ◇ Strong diverse collaboration (> 60 people participating each year) with focus on ecological, social, and economic benefits.
- ◇ Continued and expanded collaboration and communication among federal, state, and local governments, community groups, nonprofits and businesses.
- ◇ Consensus based collaboration with monthly meetings.
- ◇ Multiparty monitoring plan (in development) that will provide guidance in determining if restoration projects are meeting ecological, social, and economic objectives.
- ◇ Provided jobs (57 full-time and part-time jobs) to local residents in economically disadvantaged rural communities, which created direct and indirect economic benefits.
- ◇ 2015 Cornerstone CFLR Spending:



# CORNERSTONE CFLR

Progress Towards Meeting Targets Described in the Cornerstone CFLR Proposal



## Successes and Strengths, Cont.

- ◇ Reduced the risk of uncharacteristic fire that could harm people and property.
- ◇ Leveraged investment from other federal, state, and private sources. Since 2012, ACCG support has contributed over \$384,000 of in-kind support (match), and over \$3,907,000 of leverage towards meeting their triple-bottom line goals.
- ◇ 4th year of project implementation.
- ◇ Initial years focused on watershed restoration; aquatic, terrestrial wildlife, and rangeland restoration; and fuels reduction in the Wildland Urban Intermix (WUI). Over the next 2-3 years, more projects are expected to have actions related to improving forested and meadow environments, watershed conditions, and treating fuels outside of WUIs.

## Challenges, Obstacles, and Needs

- ◇ Personnel/funding bottleneck for project planning to maintain/increase restoration pace and scale.
- ◇ NEPA decisions vetted through Collaborative process tend to be more robust and are less likely to be litigated, yet require additional planning time.
- ◇ Need to increase local capacity for timber products.
- ◇ Future monitoring obstacles?
- ◇ The Central Sierra Nevada around the Cornerstone project area has experienced large wildfires for the past three years:
  - Aug 2013, Rim Fire - 257,314 acres
  - Sept 2014, King Fire - 97,717 acres
  - Sept 2015, Butte Fire - 70,868 acres
- ◇ These fires have sharpened ACCG's focus on building collaborative relationships and restoring fire-adapted communities.
- ◇ Large Sierra Nevada fires continue to challenge our accomplishments as post-fire salvage logging has inundated local saw mills.

