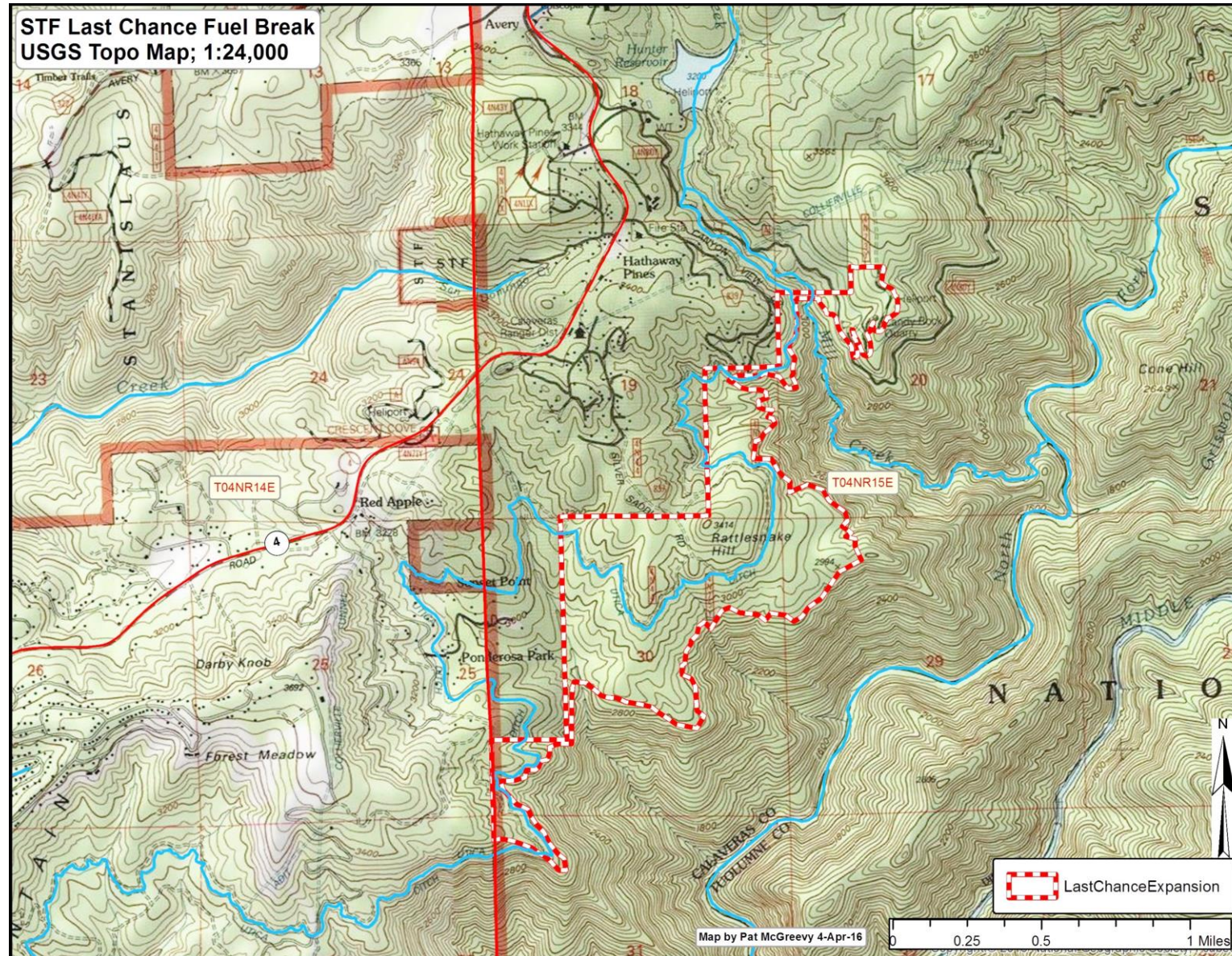


Last Chance Fuel Break (FB)

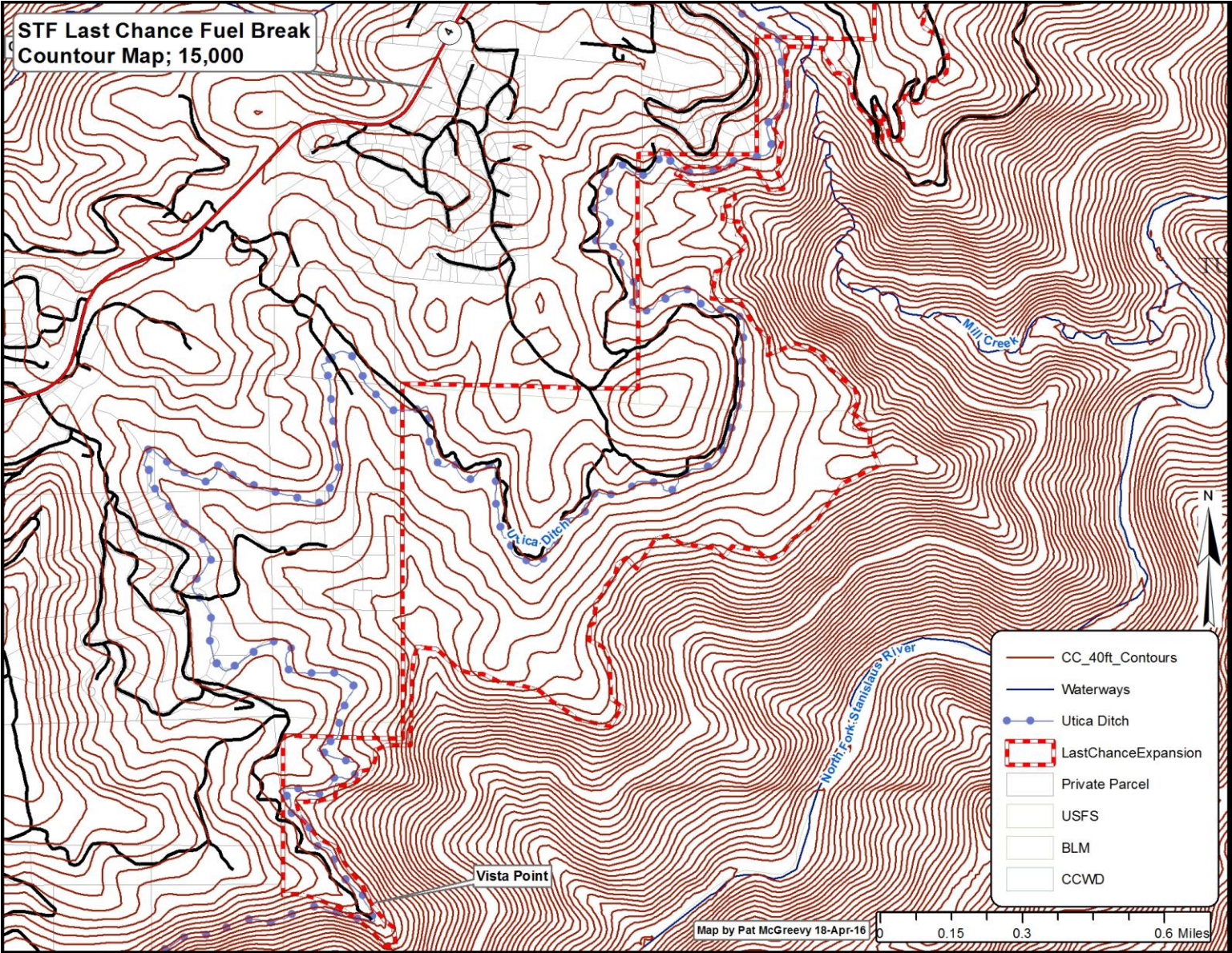
Pat McGreevy (18-Apr-16; Updated 20-Jan-18)

Last Chance Fuel Break: USGS Topo Map
FB area is 433 ac located on north rim of the Stanislaus Canyon to
protect rim developments and short segment of the Utica Ditch



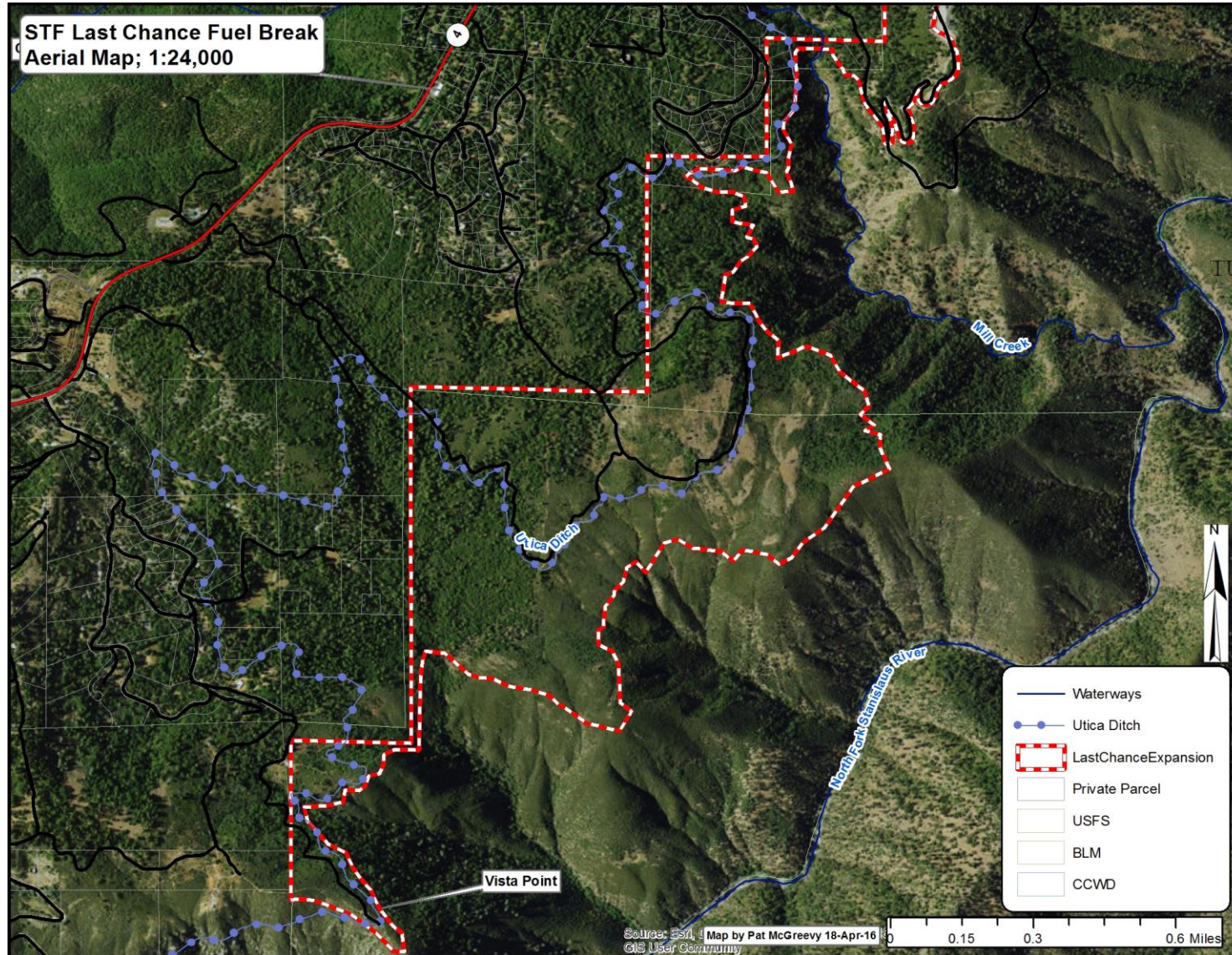
Last Chance Fuel Break: Contour Map

FB slopes are <math><35\%</math> and suitable for mastication

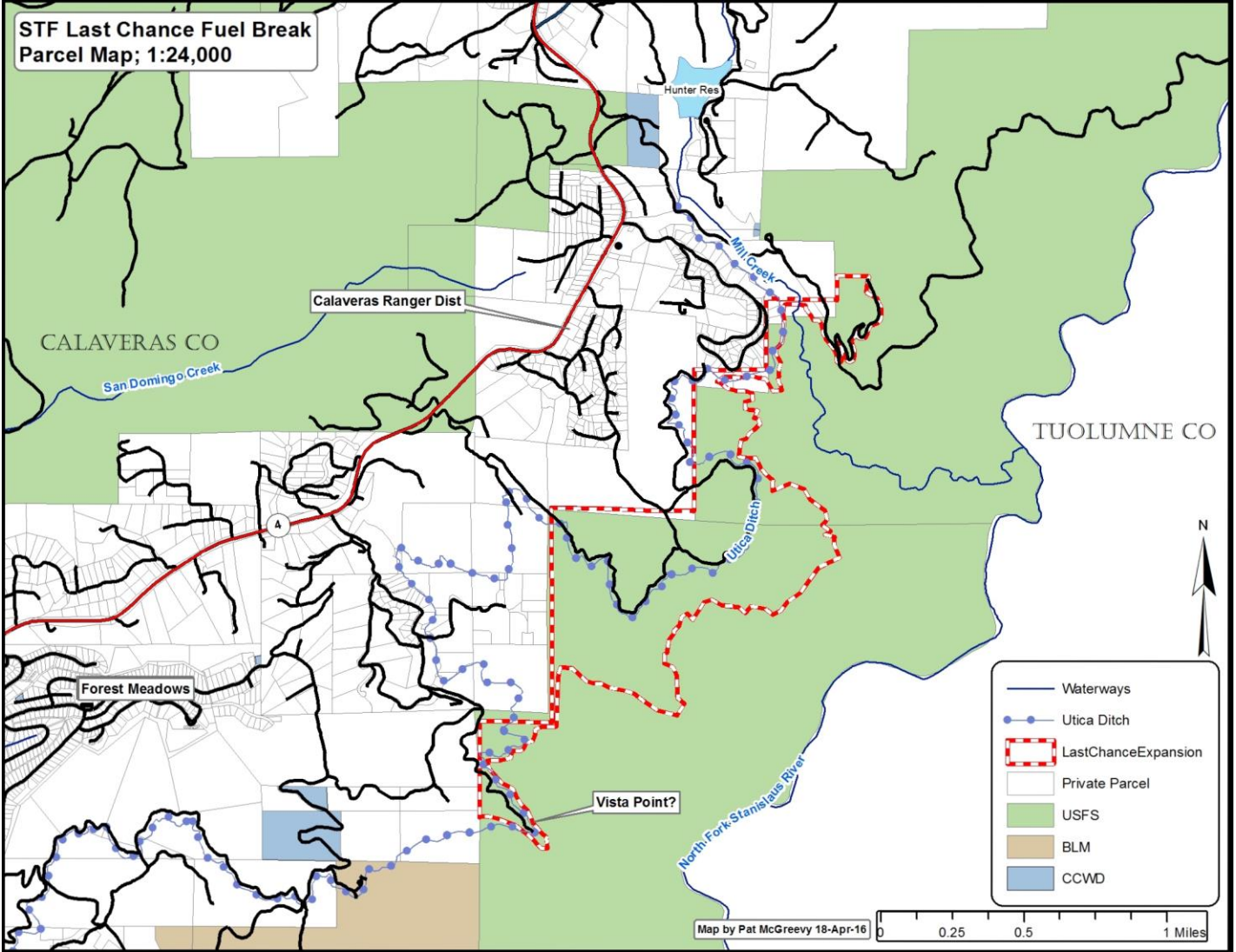


Last Chance Fuel Break: Aerial Map

Mastication shreds will remain on the surface to suppress the return of brush in the short-term. What about long-term? Shaded fuel break, native grasses, livestock grazing ...?



Last Chance Fuel Break: Parcel Map
Utica Ditch crosses USFS, BLM and Private Lands. Has USFS/Utica Water District coordinated with the Fire Safe Council & BLM to protect the ditch on their lands?



Last Chance FB Photo Series: Facing West
NF Stanislaus River; Grass in center is Camp Nine Rec Area, a
likely site for ignition.



Last Chance FB Photo Series: Facing Northwest
Utica Flume crossing private & BLM land west of project boundary.



Last Chance FB Photo Series: Facing Northeast
Utica Ditch runs through project. Will fire fuels along ditch be removed and replanted with a shaded FB of pine and oak?



Last Chance Fuel BP Series: Facing East
FB on canyon rim to be treated by mastication.



Forest Meadows WUI: Last Chance FB (433 ac) will connect with Forest Meadows FBs (~326 ac) in 2019/20

