

Moving Towards Resiliency within the Mokelumne to Kings Landscape

Public Engagement Session 2

August 12, 2019

Supervisor's Office
Sierra National Forest

Supervisor's Office
Stanislaus National Forest

Presenters

Jason Kuiken, Stanislaus NF Forest Supervisor

Dean Gould, Sierra NF Forest Supervisor

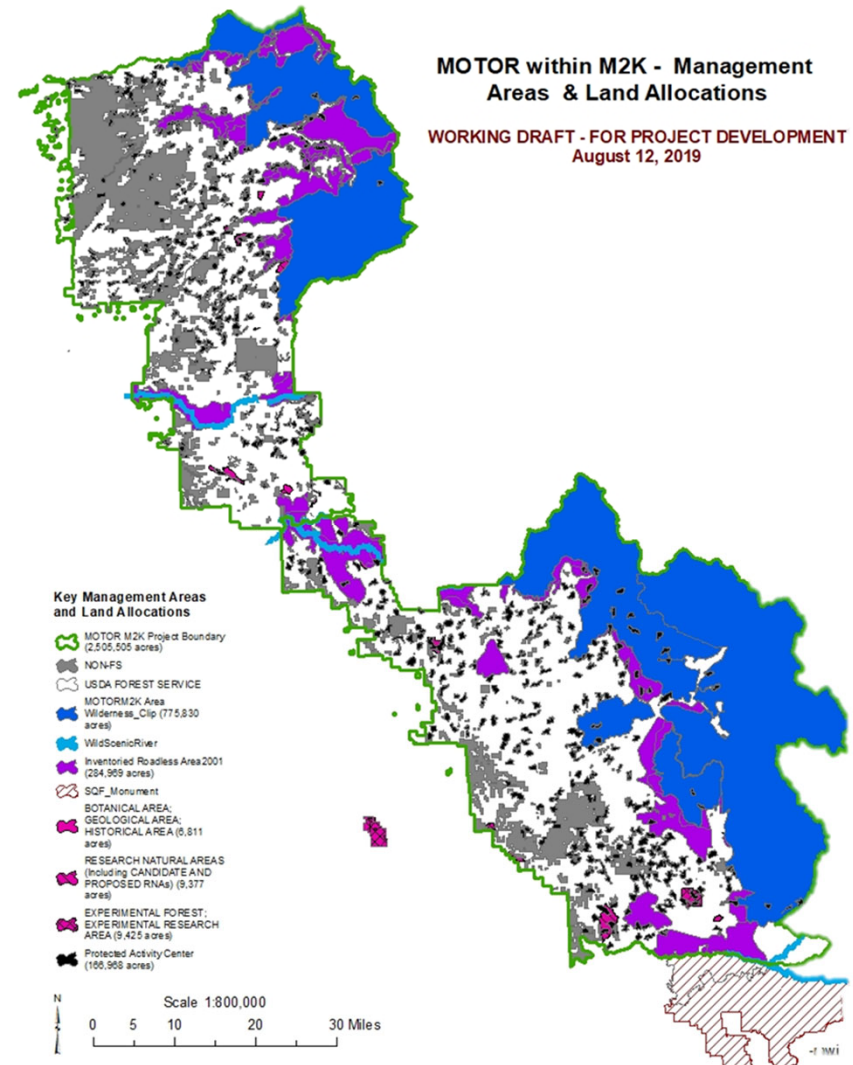
Michael Jow, MOTOR M2K project co-lead

Judi Tapia, Sierra NF, Planning Officer

<https://go.usa.gov/xVcr5>



United States Department of Agriculture

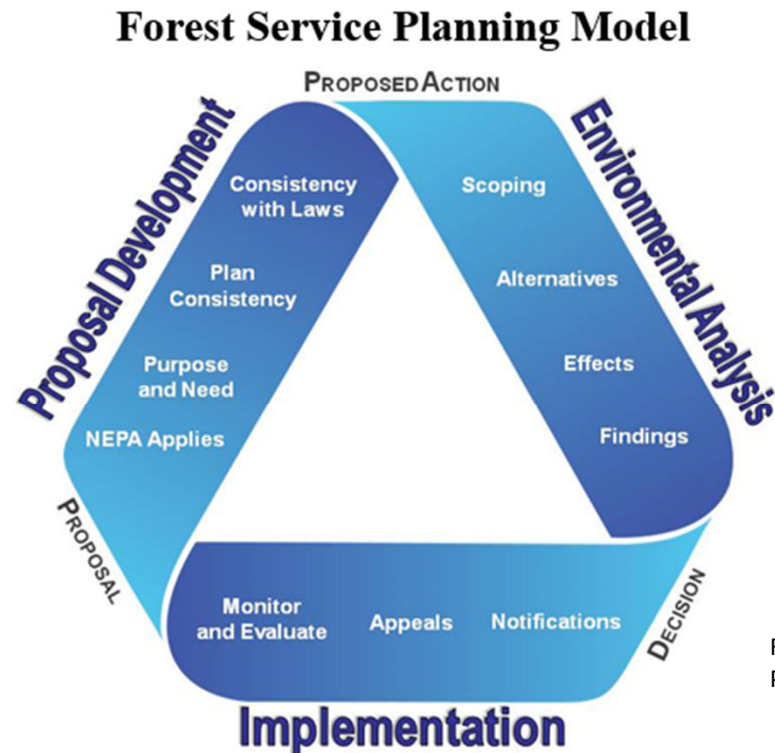


WHAT IS MOTOR M2K?

- Large Landscape-Scale Analysis and Decisions that will:
 - ☐ Authorize vegetation management actions across 2 National Forests that will be implemented over the next 10-15+ years
 - ☐ Implement treatments to improve resiliency at a pace and scale to make a meaningful change
 - ☐ Provide management adaptability and flexibility to respond to rapidly changing forest conditions and future uncertainties
 - ☐ Rely strongly on collaborative relationships and partnerships



Under the [National Environmental Policy Act](#) (NEPA), the Agency conducts environmental analyses to assess the nature and importance of the physical, biological, social, and economic effects of a proposed action and its reasonable alternatives. Conclusions are reached about the significance of the effects on the human environment. These conclusions about the significance of effects determine the levels of analysis and documentation.



FSH 1909.15 – NATIONAL ENVIRONMENTAL
POLICY ACT HANDBOOK



MOTOR M2K Conceptual Framework

- Narrowly focused to respond to the threat of wildfire and insect/disease/drought related mortality
 - ☐ Providing for safety and protect lives, property, and infrastructure
 - ☐ Increasing resiliency of ecosystems to these disturbance factors.
- Utilize Best Available Science and the Natural Range of Variation (NRV) to guide treatments
- Considering all vegetation management options
 - ☐ Rx burning, mechanical pre-commercial and commercial thinning, mastication, machine and hand piling, herbicides
- Open to Forest Plan amendments as needed



United States Department of Agriculture



MOTOR M2K Conceptual Framework (cont.)

Key Features

- Treatment Opportunity Areas/ Emphasis Areas
 - ❑ Locations where pre-identified treatments could potentially occur
- Condition-based treatment options and analysis
 - ❑ Conditions and options are described but specific treatments not mapped
- Management Requirements
- Implementation Plan
 - ❑ Pre-implementation requirements, treatment matrix
- Monitoring and Adaptive Management



United States Department of Agriculture

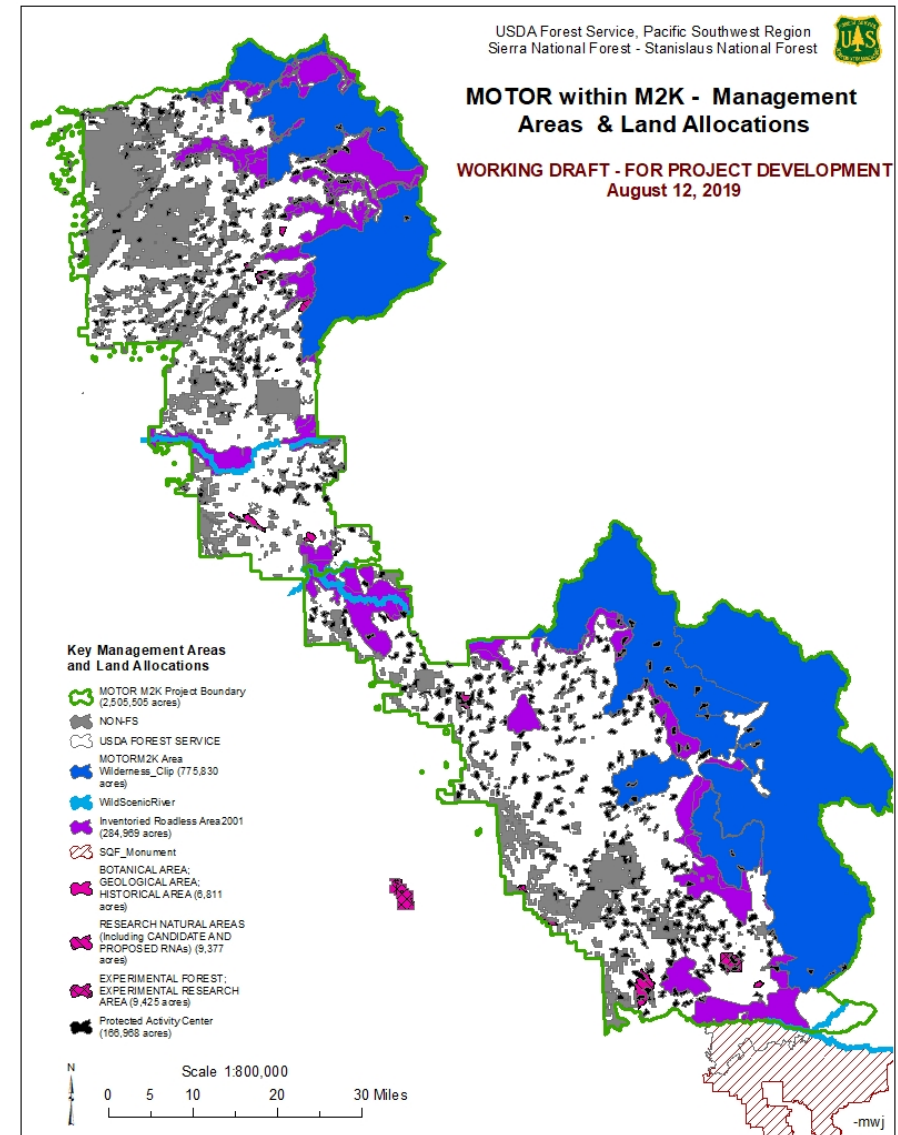


How Will We Know What Activities Will Occur Where?

MANAGEMENT AREA/LAND ALLOCATION	ACRES
MOTOR M2K Planning Area	2,505,505
Private/ NON-NFS Lands	294,201
Wilderness	775,830
Inventoried Roadless Area (2001)	284,969
Research Natural Areas	9,377
Special Interest Areas	6,811
Experimental Forest	4,919
San-Joaquin Experimental Range	4,506
WUI Defense Zone	116,361
Protected Activity Centers (PACs)	166,968
OTHER NFS LANDS	819,063



United States Department of Agriculture

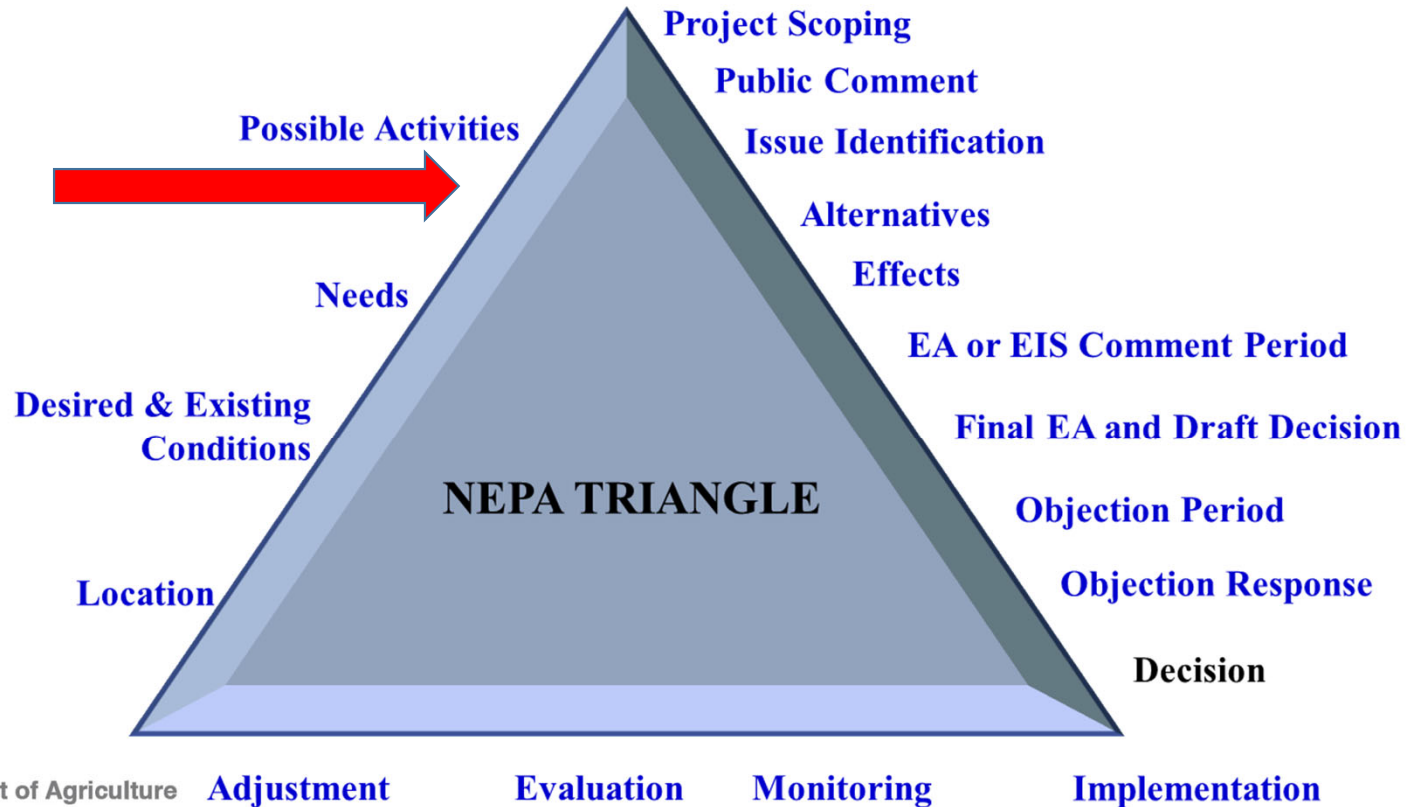


NEPA Planning Process

Blue Font: Anyone can help! - Although there are some considerations

Black Font: Forest Service Decision

**We are
here**



United States Department of Agriculture



MOTOR M2K Timeline (2019)

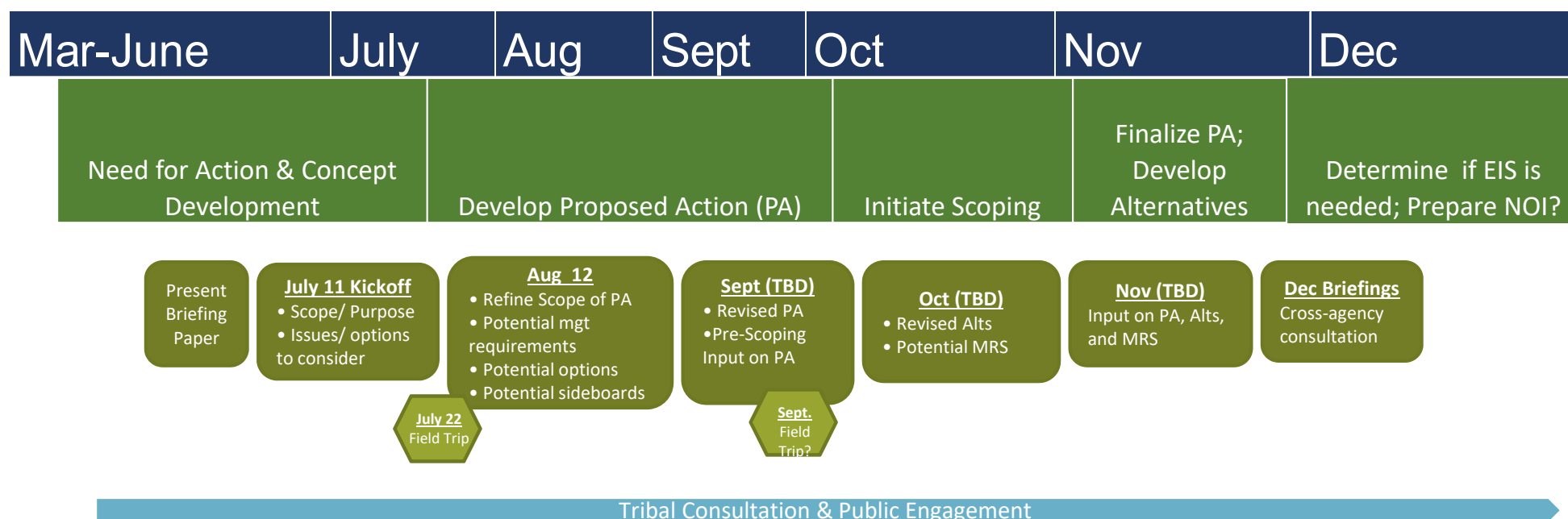


Figure adapted from the July 17, 2019 ACCG General Meeting presentation by Tania Carlone & Stephanie Horii (CBI)



United States Department of Agriculture



How Can You Help Proposal Development?

Group Discussion Breakouts (Refining the Scope)

Topic 1: Post Decision Public Participation

Topic 2: Herbicides

Topic 3: Salvage Logging

Topic 4: Additional Sideboards/Management Requirements

Topic 5: Wilderness/Proposed Wilderness and Roadless

Topic 6: CA Spotted Owl Conservation Strategy

Topic 7: Reforestation

Topic 8: Other Topics



United States Department of Agriculture



Questions?



*Open Mixed Conifer Stand, near the Wawona Hotel, Yosemite National Park.
Photo from PSW-GTR-256: Natural Range of Variation for Yellow Pine and Mixed-
Conifer Forests in the Sierra Nevada (2017)*



United States Department of Agriculture

