

# Fuel Treatments Completed within the Caldor Fire

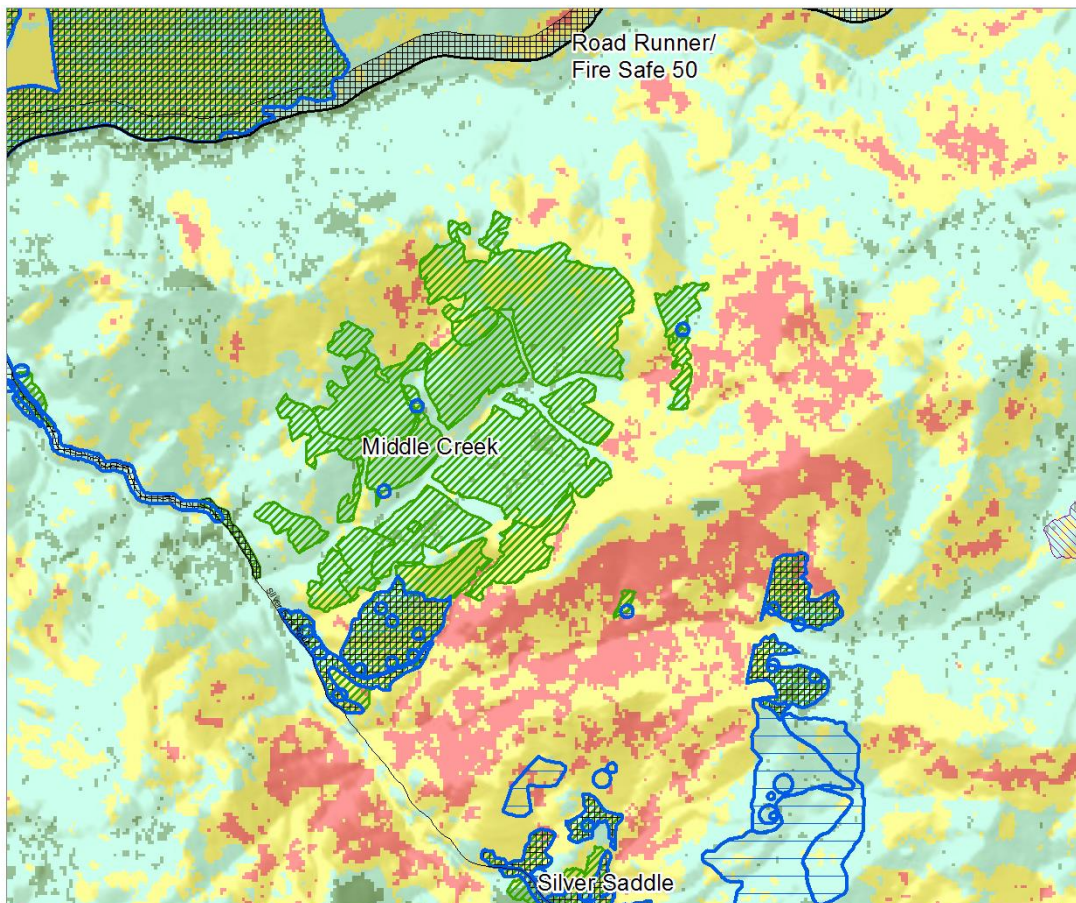
## Middle Creek Thinning Project

In 2020, just over 600 acres were mechanically thinned using variable density thinning prescriptions in partnership with the Mule Deer Foundation, in plantations established following wildfire in the 1930s and 1950s. Residual densities averaged 90 square feet of basal area with ranges from 40 to 160. The Caldor Fire progressed rapidly through neighboring areas between August 23<sup>rd</sup> and 24<sup>th</sup>, but slowly progressed in and around the recently completed Middle Creek thinning treatments. Several stands had previously been thinned in the late 1990s-early 2000s.



Post Caldor Fire  
September 2021  
Photo by USFS

Post Caldor Fire  
September 2021  
Photo by USFS



**USDA** U.S. Department of Agriculture  
Eldorado National Forest  
**Caldor Fire 2021**

**Fuel Treatments (2006-2021)**

- Administrative Boundary
- Caldor Fire Perimeter
- Hand Thin/Pile/Chip
- Wildfire
- Prescribed Burning
- Mastication/Chipping
- Mechanical Harvest
- Chemical Treatments

**Final Soil Burn Severity**

- High
- Moderate
- Low
- Unburned / Very Low

0 0.35 0.7  
Miles

The USDA Forest Service uses the most current and complete data available. GIS data and products accuracy, reliability, timeliness, and completeness are dependent on the accuracy, accuracy only at certain scales, based on modeling or interpretation, incomplete with being generated or the best, etc. Users will products for purposes other than those for which they were created, may yield inaccurate or misleading results.

The Forest Service reserves the right to correct, update, modify, or replace. © is products without notification. For more information, contact:

Eldorado National Forest: 100 Form Road, Paradise, CA 95667-7510 (530) 893-2412

Service Layer Credits: Sources: Esri, USGS, NOAA, Sources: Esri, Garmin, USGS, NPS (530) 893-2412