

Fuel Treatments Completed within the Caldor Fire

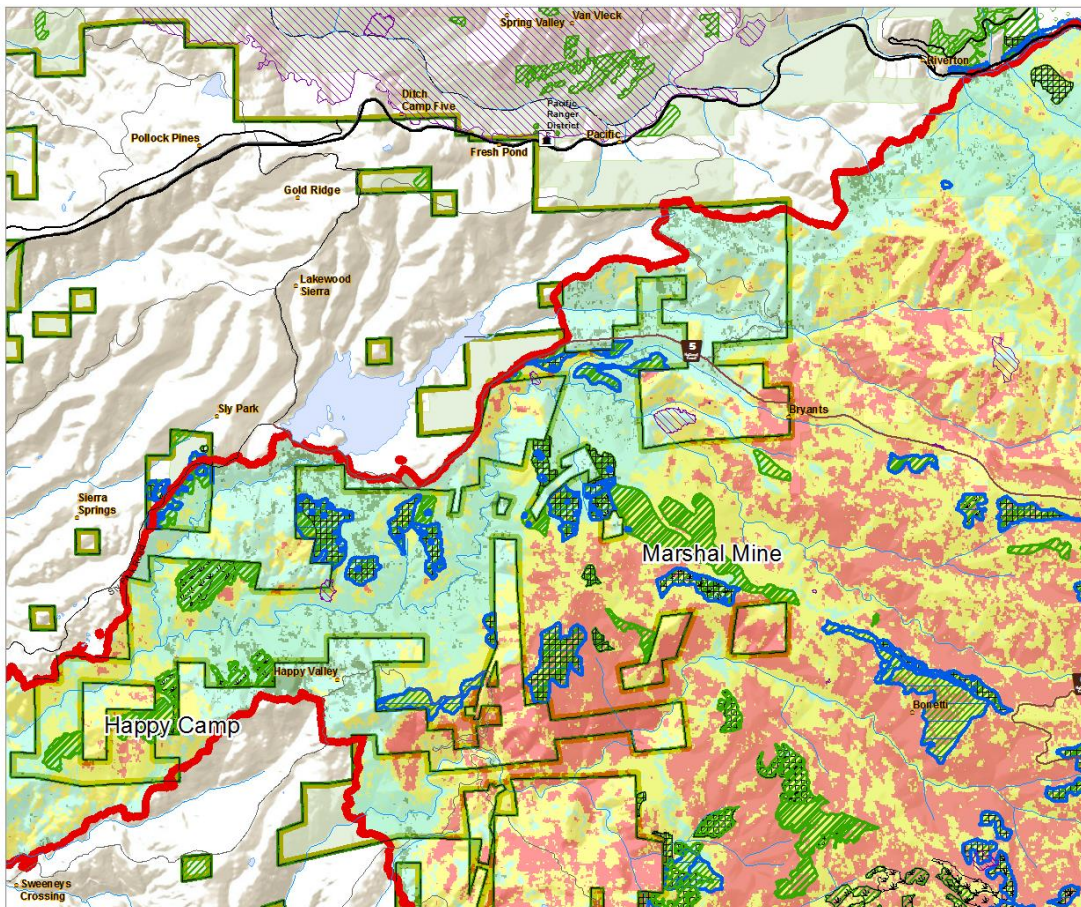
Marshall Mine and Happy Camp Projects

Between 2007 and 2018 a variety of implantation tools, including contracts and work by Forest Service Crews, were used to complete a combination of mechanical thinning, hand thinning, burning of piled material and understory burning on more than 2,300 acres of the Eldorado National Forest, in the vicinity of Sly Park and Sierra Springs areas. Work by the Forest Service tied in with rules treatment implemented on neighboring private lands to create a network of areas that firefighters were able to use to safely and effectively conduct firefighting operations to contain the fire and protect the communities in this area.



Mop up near Sierra Springs during the Caldor Fire August 2021
Photo by USFS

Sierra Springs during the Caldor Fire August 2021
Photo by USFS



USDA U.S. Department of Agriculture
Forest Service Eldorado National Forest
Caldor Fire 2021

Fuel Treatments (2006-2021)

- Administrative Boundary
- Caldor Fire Perimeter
- Hand Thin/Pile/Chip
- Wildfire
- Prescribed Burning
- Mastication/Chipping
- Mechanical Harvest
- Chemical Treatments

Final Soil Burn Severity

- High
- Moderate
- Low
- Unburned / Very Low

The USDA Forest Service uses the most current and complete data available. GIS data and product accuracy may vary. They may be developed from sources of differing accuracy, accurate only at certain scales, based on modeling or interpretation, inaccurate while being created or revised, etc. Using GIS products for purposes other than those for which they were created may result in inaccurate or misleading results.

The Forest Service reserves the right to correct, update, modify, or replace GIS products without notification. For more information, contact:

Eldorado National Forest: 100 Forest Road, Mariposa, CA 95301-5210, 953020-5412

Service Layer Credits: Sources: Esri, USGS, NOAA, Source: Esri, Garmin, USDA, VFW