

UMRWA-USFS MAC Project

Fuelbreaks

Informational update

ACCG Planning Work Group Meeting
March 26th, 2025

Presented by: Megan Layhee, UMRWA



Upper Mokelumne River
Watershed Authority

MAC Project Fuelbreak Status Update

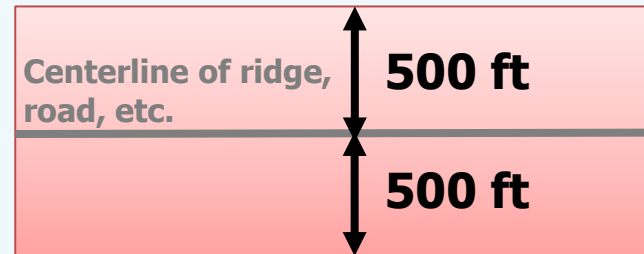
1. Overview on revised FB delineation approach.
2. Review Eldorado NF's MAC Project revised FB acreages and veg types.
3. Status update on Stanislaus NF's MAC FB delineation- in progress.
4. Status update on FB prescriptions.
5. Update on FS-SPI fuelbreak agreement.



MAC Fuelbreak Delineation

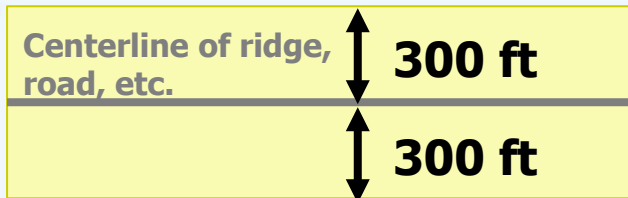
1,000-ft wide:

The strategic intent is to provide an **effective control point for fire suppression in the event of a large fire.**



600-ft wide:

The strategic intent is to provide a prepared point to **quickly and safely conduct fire suppression activities,** such as back burning, that would preclude the use of heavy equipment to cut fire lines. **Provide vegetation changes in the landscape to stop smaller fires and slow down larger ones** before reaching a ridge or road.

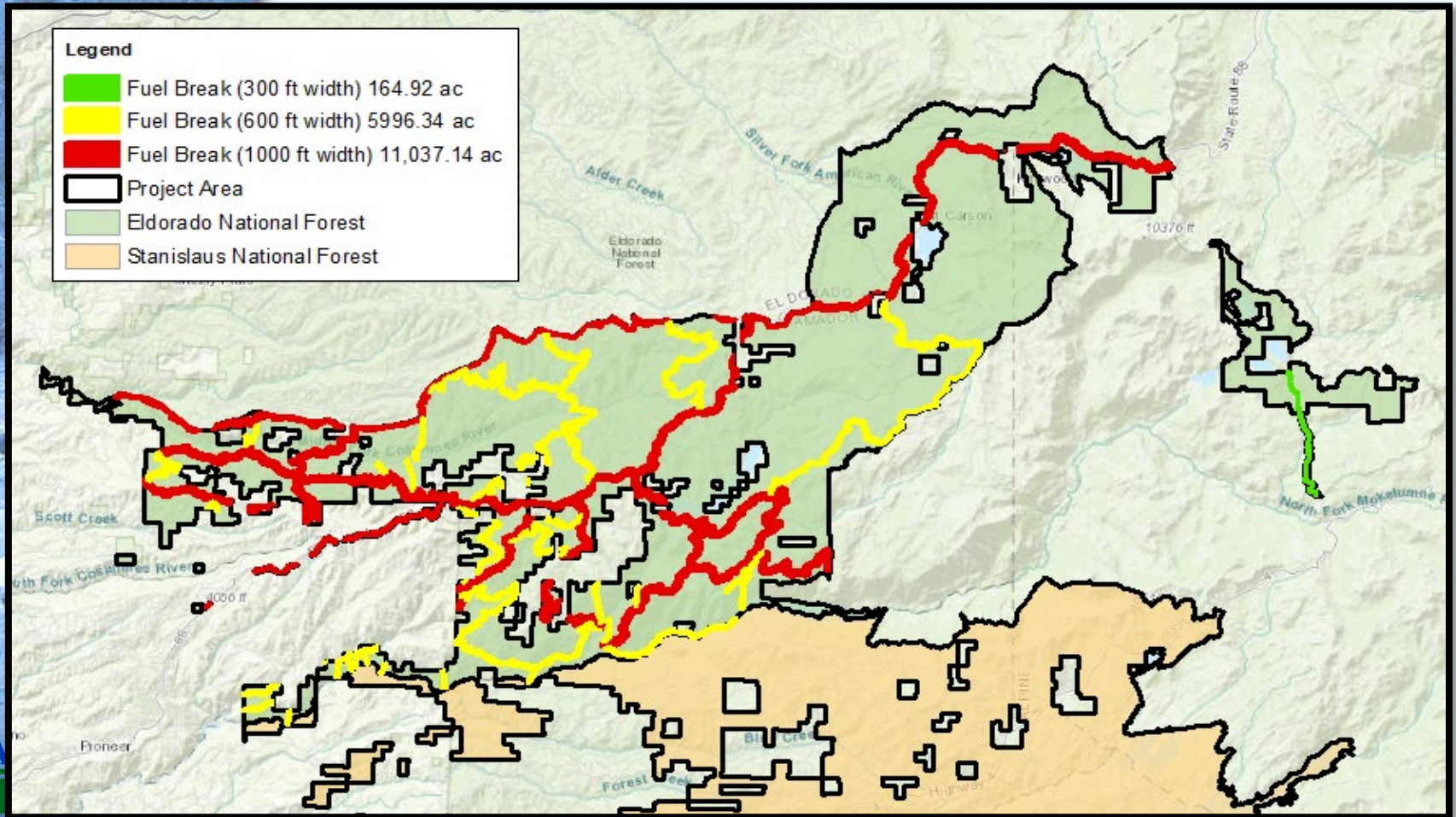


300-ft wide:

Strategic intent of the FBs **adjacent to private property is to minimize the movement of wildfire from National Forest System lands to private property, and visa versa** protecting residences, infrastructure and other asset values.



MAC Project, Fuelbreaks: Eldorado NF



USDA

MAC Project, ENF Fuelbreaks: Canopy size class, density

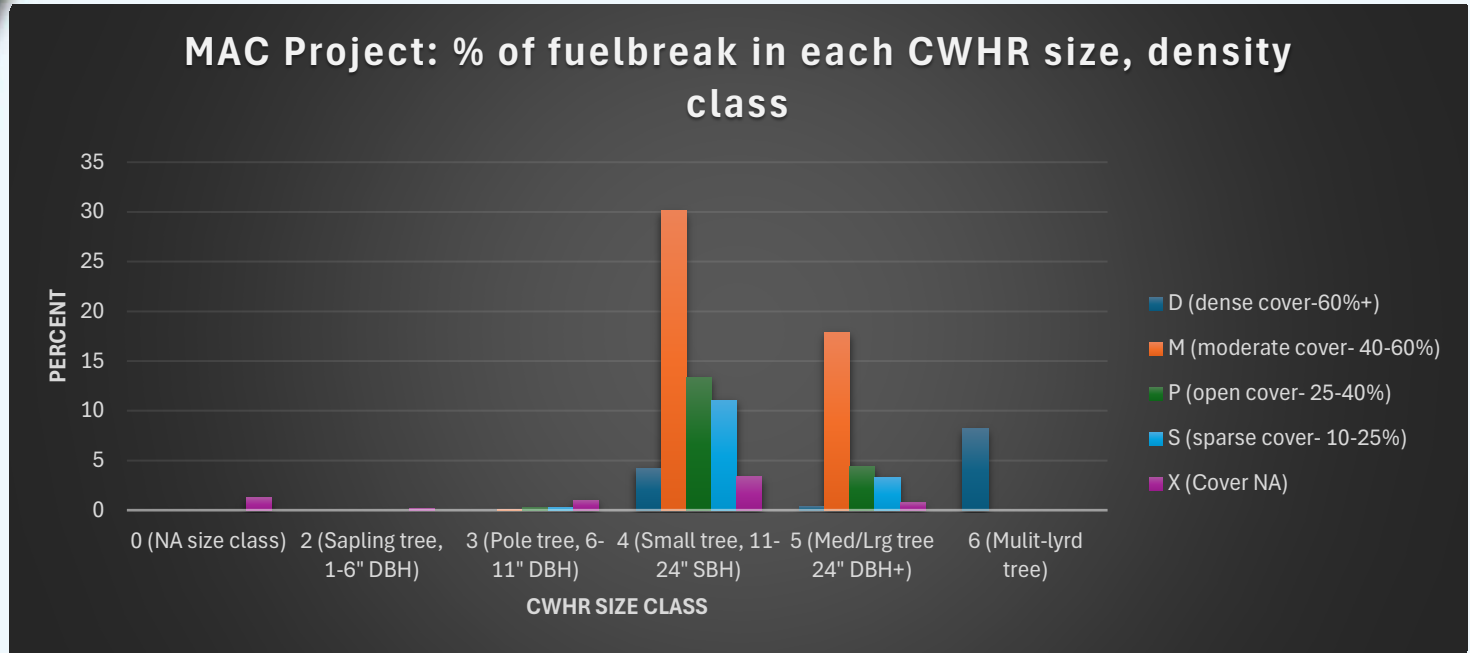
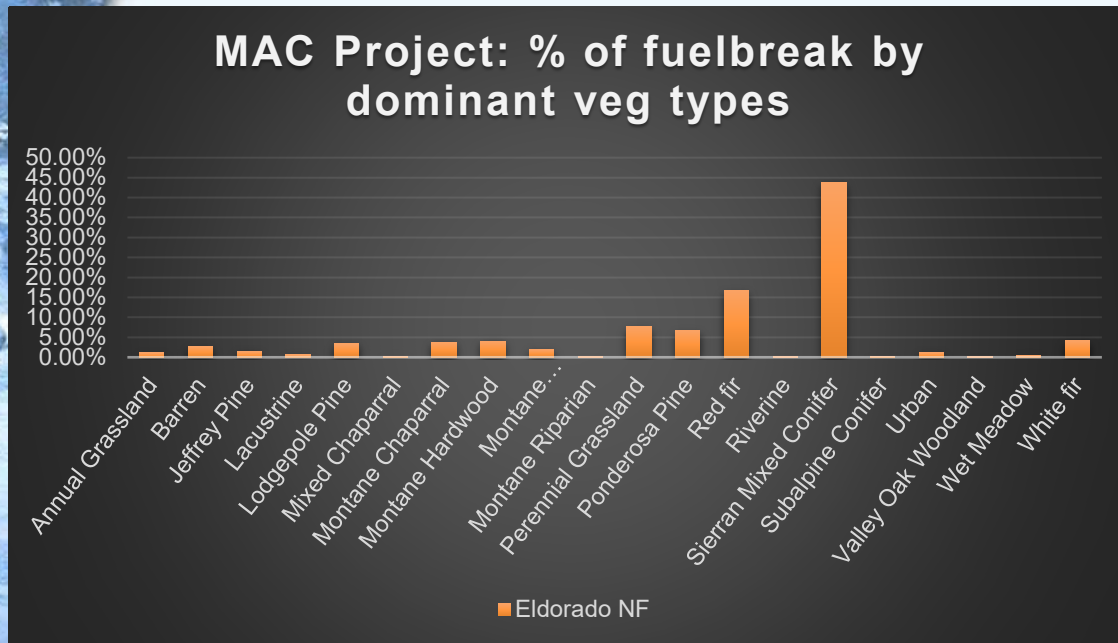


Table E1. Suitable habitat for the CSO using the California Wildlife Habitat Relationships (CWHR). Taken from Table 2 of the 2019 CSO Strategy.

CHWR Classification	Tree Size QMD	CWHR Canopy Class	Canopy Cover
4D	11 to 24"	Dense cover	60 to 100 percent
4M	11 to 24"	Moderate cover	40 to 59 percent
5D	more than 24"	Dense cover	60 to 100 percent
5M	more than 24"	Moderate cover	40 to 59 percent
6	more than 24"	Multilayered canopy with dense cover	



MAC Project, ENF Fuelbreak: Dominant Veg Type



Annual Grassland	1.16%
Barren	2.73%
Jeffrey Pine	1.46%
Lacustrine	0.63%
Lodgepole Pine	3.34%
Mixed Chaparral	0.18%
Montane Chaparral	3.76%
Montane Hardwood	4.01%
Montane Hardwood-Conifer	1.94%
Montane Riparian	0.01%
Perennial Grassland	7.68%
Ponderosa Pine	6.63%
Red fir	16.71%
Riverine	0.03%
Sierran Mixed Conifer	43.67%
Subalpine Conifer	0.28%
Urban	1.22%
Valley Oak Woodland	0.01%
Wet Meadow	0.43%
White fir	4.11%



MAC Project Fuelbreak Status Update

1. Overview on revised FB delineation approach.
2. Review Eldorado NF's MAC Project revised FB acreages and veg types.
3. Status update on Stanislaus NF's MAC FB delineation- in progress.
4. Status update on FB prescriptions- in progress.
5. Update on FS-SPI fuelbreak agreement.

